



# Trunk & Distribution Adapters

## Housing to Housing Sealed Locking Installation Guide



**Applicable Part Numbers**  
G-KS-KS-MLKG-T

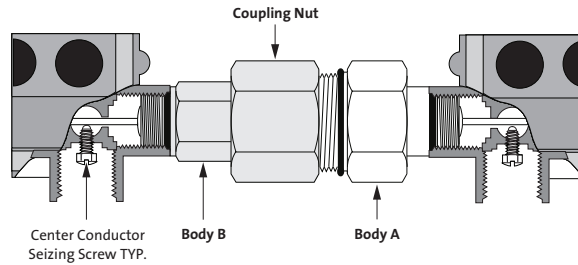
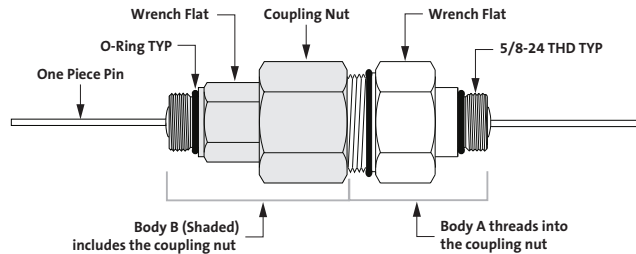
**Recommended Tools**  
1 — 10" Adjustable Wrenches  
1 — 3/4" Open End Wrench  
1 — Screwdriver  
1 — Pin Cutters

1. Remove equipment port caps and loosen seizure screws to accept pin. Verify pin length and, if necessary, trim each end of the pin to equipment manufacturer's specification.

2. Loosen the Coupling Nut until you can just separate it from **Body A**.

3. Using an adjustable wrench, tighten **Body A** into equipment to manufacturer's specification. Using a 3/4" open end wrench, tighten **Body B** into equipment to manufacturer's specification. Align equipment. Hand tighten the coupling nut to secure locked position. The 36 internal locking teeth will engage during this process. While using a wrench to hold **Body A** from rotation, use a second wrench to tighten the coupling nut securely.

4. Tighten the center conductor seizure screws and replace the portcaps.



**Corning Gilbert Inc.**  
Broadband Products  
5310 W. Camelback Rd.  
Glendale, AZ 85301 U.S.A.  
phone: 800 528 5567 (U.S. and Canada)  
(01) 623 245 1050 (International)  
fax: 800 344 6358  
(01) 623 939 3538  
website: [www.corning.com/corninggilbert](http://www.corning.com/corninggilbert)  
e-mail: [info-gilbert@corning.com](mailto:info-gilbert@corning.com)